

GRADE SCALE

- F**.....0%-59%
- D**.....60%-69%
- C**.....70%-79%
- B**.....80%-89%
- A**.....90%-100%



ENCOMPASS ACADEMY

ALGEBRA 1

Fall Syllabus



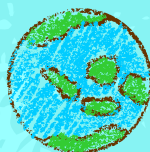
ACCOUNTABILITY

Overall 10%

Students receive accountability credit by getting stamps in their accountability logs and getting answers correct on their Friday attendance check ins. Stamps may be earned at the conclusion of class by students who are: Taking notes, asking questions, completing tasks and respecting staff and others. Friday check-ins are worth 100 points and Monthly logs are worth 100pts/week.

TOPICS

- Data Representations and Mystery Computations
- Write Equations to Model Relationships & Which Variable to Solve for?
- Solve Systems by Substitution and Elimination
- Write and Solve Inequalities in 1 Variable & Relative Frequency Tables
- Use Function Notation and Compare Graphs
- Absolute Value Functions
- Use Functions to Model Battery Power
- Understand Decay
- Exponential Situations as Functions and Model Exponential Behavior
- Expressed in Different Ways
- Changes over Equal Intervals & Predict Populations
- Standard Form and Graphs of Functions in Standard and Factored Forms
- Solve Quadratic Equations with the Zero Product Property
- How Many Solutions and Rewrite Quadratic Expressions in Factored Form
- Apply the Quadratic Formula and Rewrite in Vertex Form
- Use Quadratic Equations to Model Situations and Solve Problems



CLASSWORK & HOMEWORK

Overall 20%

Students are responsible for taking notes during class that they are able to use during class, on homework, weekly quizzes, and exams. Students receive weekly homework and are responsible for completing it prior to class on Thursdays. To receive full credit (A), homework must be completed and turned in before class on Thursday. Students can receive partial credit (B) by turning in completed homework before the following Monday. If homework is not turned in by the following Thursday, the gradebook grade changes to a 55% (F). Students can turn in completed homework before the end of the quarter for up to 70%.

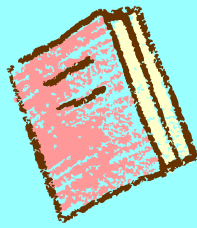
ASSESSMENTS

Weekly Cool Downs
Midterm
Final

Overall 30%
Overall 20%
Overall 20%

GRADE SCALE

F.....0%-59%
D.....60%-69%
C.....70%-79%
B.....80%-89%
A.....90%-100%



ENCOMPASS ACADEMY

ALGEBRA 1

Fall Syllabus



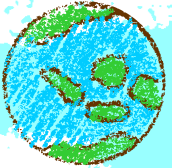
PHONE POLICY

NO PHONES IN CLASS. ALL PHONES WILL NEED TO BE PLACED IN THE PHONE POUCH AT THE START OF CLASS.

Bathroom Policy

STUDENTS MAY NOT LEAVE DURING THE FIRST AND LAST 10 MINUTES OF CLASS. ONLY ONE STUDENT IS ALLOWED OUT OF THE CLASSROOM AT A TIME.

NO EATING IN CLASS



Notebooks

YOU WILL RECEIVE PAPER NOTES AND POWERPOINT NOTES. YOU WILL BE EXPECTED TO KEEP A NOTEBOOK. ALL NOTES SHOULD BE KEPT ORGANIZED IN CHRONOLOGICAL ORDER STARTING IN THE FRONT OF YOUR NOTEBOOK. DO NOT THROW AWAY OLD NOTES. IF YOU ARE ABSENT, IT IS YOUR RESPONSIBILITY TO GET THE NOTES FROM A CLASSMATE.



ACADEMIC DISHONESTY

ALL STUDENTS DESERVE A QUIET TESTING ENVIRONMENT. YOU ARE EXPECTED TO DO YOUR OWN WORK ON TESTS, QUIZZES, ETC. IT IS INAPPROPRIATE IF IT APPEARS TO ME THAT YOU ARE LOOKING AT ANOTHER STUDENT'S TEST OR THAT YOU ARE HELPING SOMEONE DURING A TEST OR TALKING/DISRUPTING OTHERS. A STUDENT WILL RECEIVE A ZERO ON A QUIZ/TEST FOR ANY OF THESE INFRACTIONS.

LATE WORK POLICY

STUDENTS CAN MAKE UP MISSED HOMEWORK BY TURNING IT IN BEFORE THE QUARTER END. HOMEWORK MUST BE FULLY COMPLETED. STUDENTS CAN MAKE UP MIDTERMS AND COOL DOWNS MISSING OR WITH SCORES LOWER THAN 69%. IN CLASS PRIOR TO THE QUARTER END. FINALS CANNOT BE MADE UP.